

**ISICELO SEMVUME YEZEMVELO MAYELANA NOKWAKHIWA KUPHINDE  
KUSETSHENZISWE INDAWO YEZENTENGISO ENDAWENI YASE WEMBEZI,  
ETHOLAKALA KU PORTION 51 (KA 7) WE FAMU I- KLIPPLAAT DRIFT NAMBA 1009,  
NGAPHANSI KWAMASIPALA WOTHUKELA**

*Ibhuku elichaza kabanzi*

*October 2021*

**Isizathu saleliphepha**

**Isizathu saleliphepha iloku okulandelayo:**

- Ukwazisa laba abafisa ukuthola ulwazi nalabo abathintekayo ngalesi sicelo esihlongozwayo;
- Ukunikezela ulwazi mayelana nesisusa salesi sicelo; kanye
- Ukunika ithuba labo abafisa ukuletha imininingwane yabo nokuletha imibono yabo mayelana nale ntuthuko

**Okuhlongozwayo**

I- Klipplaats Family Trust ihlela ukwakha indawo yezentengiso ku Portion 51 (ka 7) we famu elibizwa nge- Klipplaat Drift Namba 1009, ngaphansi kwamasipala waso Thukela. Lendawo ehlongozwa ukwakhiwa ifakwe ngaphansi kwesigaba sendawo engalimeka, ngokwemithetho yakamasipala yezindawo.

Isigaba sokuqala saloku kwakhiwa sizofaka ukwakhiwa kwezitolo, irenki yamatekisi, amahhovisi kanye nendawo yokuthela uphethiloli (ezoba nomthamo ka 69 000 m<sup>3</sup>), indawo ezothathwa ilesisigaba sokuqala ihlawumbiselwa kuma hektha ayisikhombisa (7 ha).

Isigaba sesibili sizofaka ukwakhiwa kwamasayithi ayishumi nesishiyagalombili (18), azobe esetshenziselwa amabhizinisi ahlukene. Isayithi ngayinye izoba nguhhafu we hektha (0,5 ha) usayizi. Mase ehlangene wonke lamasayithi, azokwakha amahlektha alishumi (10ha).

**Isicelo esenziwayo**

i-Metamorphosis Environmental Consultants iqashwe yi- Klipplaats Family Trust ukuthi iphathe isicelo semvume yezemvelo esizohanjiswa emnyangweni waKwaZulu Natali owengamele ukuthuthukiswa komnotho, ezokuvakasha kanye nokuphathwa kwemvelo, loku kwenziwa ngokwesigaba 24(5) somthetho i- National Environmental Management Act (Umthetho 107 ka 1998).

Ngokubuka kwemisebenzi edinga imvume yezemvelo, lesi sicelo sithinta imisebenzi edinga ukuba kwenziwe I Basic Assessment ngaphansi komthetho we National Environmental Management Act: GNR 983 (ebuyekeziwe) (Ilisti yokuqala):

**Umsebenzi 28:**

***“Ukwakhiwa kwentuthuko yokuhlala, exubile, yokudayisela, yezimboni noma yengqalasizinda lapho indawo ehlongozwayo yayikade ibekelwe ukutshala, ukugcina izilwane zokuzingelwa noma ukukhulisa amahlathi, ngomhlaka noma ngaphambi komhlaka 01 April 1998, nalapho lentuthuko***

- (i) izokwakhiwa endaweni eyidolobha, lapho indawo ezokwakhiwa ingaphezu kwama hektha amahlanu; noma
- (ii) Izokwakhiwa ngaphandle kwedolobha, nalapho indawo ezokwakhiwa ingaphezu kwe hektha elilodwa, singabali indawo lapho ukwakhiwa kwendawo yokuhlala, exubile, yokudayisela, yezimboni noma yengqalasizinda osekuvele kwenziwe”

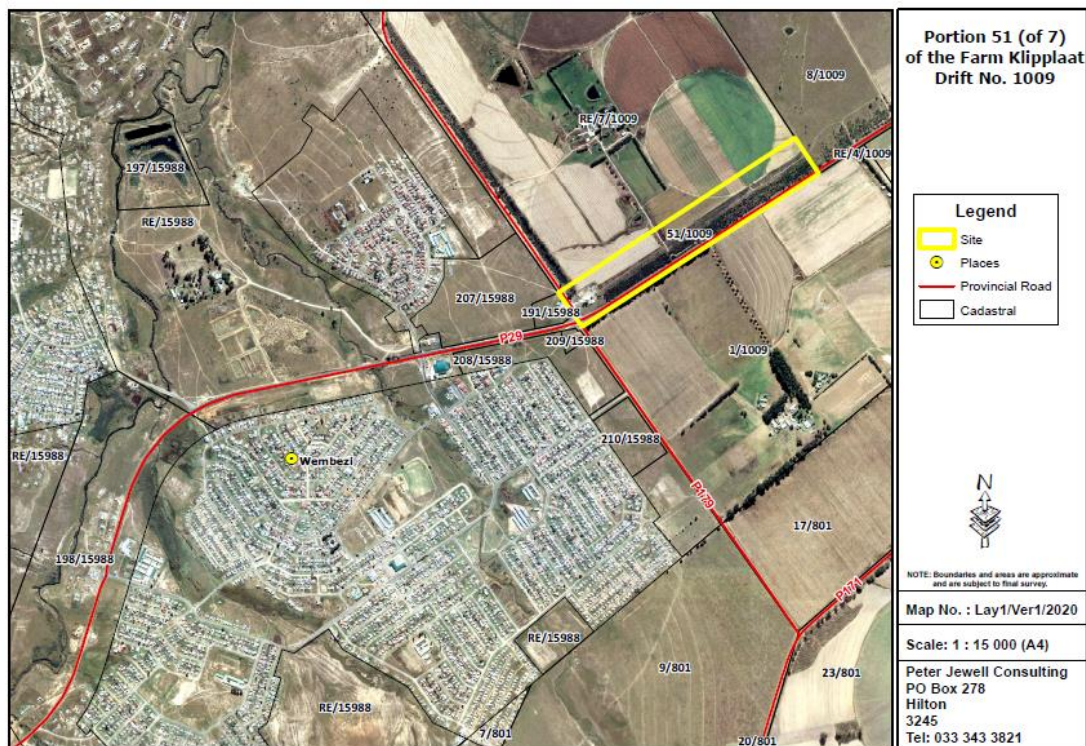
### **Umsebenzi 56:**

“Ukunwetshwa komugwaqo ngamamitha angaphezu kwayisithupha noma ukwandisa ubude komugwaqo ngekhilomitha elingaphezulu kwelilodwa-

- (i) nalapho ububanzi buzoba ngaphenzu kwamamitha ayishumi nantathu nohhafu (13,5) noma
- (ii) lapho umgwaqo okhona uzovulwa ngamamitha ayisishiyagalombili nangaphezulu, singabali ukunwetshwa noma ukwandiswa okwenziwa ezindaweni ezingaphandle kwedolobha”

### **Indawo yentuthuko**

Lentuthuko ehlongozwayo itholakala eduze nase Wembezi, eningizimu yentshonalanga nedolobha lase Estcourt. Ama coordinate ka Portion 51 (ka 7) athi 29°02'21" S and 29°48'00" E.



**Isithombe 1: Indawo yentuthuko ehlongozwayo**

### **Ukuchaza kabanzi ngalentuthuko**

Lendawo ehlongozwayo ithatha usayizi othe awube ngaphansi kancane kwama hektha angamashumi amabili (20 ha)

Naku okuhlongozwayo:

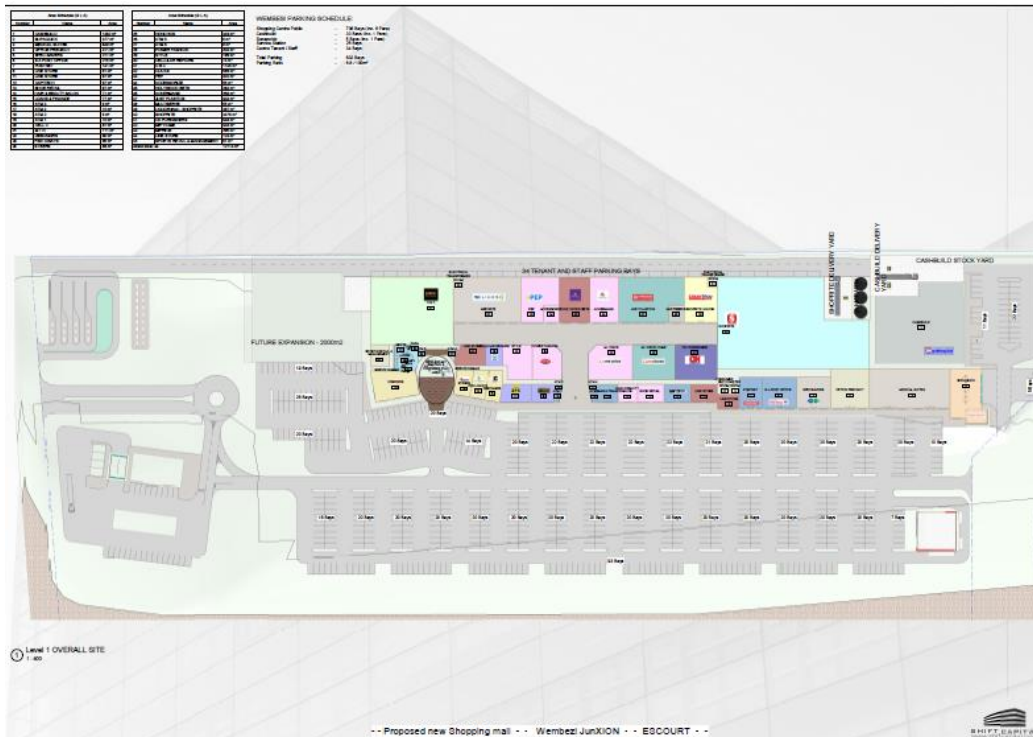
Isigaba sokuqala sale ntuthuko sizofaka ukwakhiwa kwegaraji elizoba nomthamo ka 63 000 m<sup>3</sup> wamafutha ahambisa izimoto, kuzophinda kube nendawo yokudayisela ezokwanela usayizi ongu 12 363 m<sup>2</sup>: kulendawo kuzoba khona isitolo segalaji (250m<sup>2</sup>), amahhovisi (12 113 m<sup>2</sup>), irenki yamatekisi, imigwaqo kanye nendawo yokupaka. Konke loku kuzokwanela indawo ethi ayibe amahlektha ayisikhombisa (7ha). Indawo lena angeke ivumele izimoto ezinga ukulalela khona.

Igalaji likaphethiloli lizoba nethangi elilodwa langaphansi elizothwala udizili kanye namabili azothwala uphethiloli. Mase umthamo uhlangene walamathangi uzoba ngu- 69 000 m<sup>3</sup>; kuzoba nendawo yokuzikhulula kanye namahhovisi.

Isigaba sesibili salentuthuko sizofaka ukwakhiwa kwamasayithi ayishumi nesishiyagalombili (18), azobe esetshenziselwa amabhizinisi ahlukene. Isayithi ngayinye izoba nguhhafu we hektha (0,5 ha) usayizi . Mase ehlangene wonke lamasayithi, azokwakha amahlektha alishumi (10ha). Kulezi zindawo kuzoba khona nezindawo zokukhiqiza ezizophakela amadolobha aseduzane.



Isithombe 2: Sibonisa izigaba ezimbili zentuthuko



**Isithombe 3: Sibonisa ukuma kwendawo yegalaji kanti nendawo yokuthengisa (Isigaba 1)**

### Inggalasizinda

Imigwaqo: Lentuthuko izotholakala ekhoneni lemigwaqo u- P29 no P179. Yomibili lemigwaqo ifakiwe itiyela, ukuze ukwazi ukungena kulendawo, kuzosetshenziswa u P179 ozolungiswa kangcono. Impambano mgwaqo nayo izolungiswa ngokwemiyalelo yeriphothi ekhuluma ngezemigwaqo.

Amanzi: Amanzi okuphuza azonikezelwa ngumasipala Inkosi Langalibalele, ngokwale ntuthuko kudingeka angeqile ku- 1,94 litres / ngesekhendi.

Amanzi angcolile: Lamanzi azoyiswa esitamkokweni esikhona esiphethwe kumasipala Inkosi Langalibalele ngokwale ntuthuko umthamo angeke weqe ku 1,9 litres / ngesekhendi.

Ulwazi mayelana nokuphathwa kwamanzi emvula kuzofakwa mase amaplani esengase maphethelweni.

Nazi izifundo esenziwe ngaphansi kwalesi sicelo sezemvelo:

- Heritage Impact Assessment
- Traffic Impact Assessment
- Palaeontological Impact Assessment;
- Ecological Assessment; and
- Geotechnical;
- Geohydrological;
- Engineering (including stormwater).

### **Ukuchaza kabanzi ngemvelo ezothinteka**

Lapha ngezansi sichaza kancane ngokutholwe ezinye zezifundo ezibalwe ngaphezulu. Ulwazi olwanele luzofakwa kwiriphothi yesicelo uma isibhaliwe yaqedwa.

#### **Heritage Impact Assessment (Ezemilando)**

Azikho izindawo ezitholwe zibalulekile ngokomlando, lendawo ezokwakhiwa ayibaliwe futhi ezindaweni ezinosiko olukhulu. Lentuthuko ingaqhubeka yakhiwe ngoba ngeke iphazamise lutho.

#### **Traffic impact Assessment (Ezemigwaqo)**

Lentuthuko ehlongozwayo iyasekelwa ngokwezemigwaqo, kodwa kumele kuqapheleke ukuthi izincomo ezifakwe kwiriphothi ethinta loku, ziyalandelwa. Lezi zincomo zifaka loku okulandelayo:

- Ukuthi impambanomgwaqo ka P29 no P179 ithuthukiswe iba namalambu (robots);
- Kumele kwakhiwe unqenqema lokuhamba maqondana nengaphambili la P179 kanye futhi maqondana nomgwaqo nje wokungena khona kulendawo;
- Amalambu okukhanyisa asemugwaqeni kmele afakwe;
- Kumele izimoto ezithutha umphakathi zibe khona nazo.

#### **Palaeontological Impact Assessment (Ezempilo yakudala)**

Ngokwesipiliyoni kanye nokungabikhona kwemibhalo ethintana nempilo yakudala kulendawo, akulindelekile ukuthi kungatholakala amagugu agqibeka ngaphansi komhlabathi walendawo.

#### **Ecological Assessment (Ezezihlahla nezitshalo)**

Lendawo engamahektha ayishumi nanhlanu isiyaphazamiseka ngokwezemvelo futhi:

- Akukho okuveze ukuthi inhlobo katshani ebizwa nge KZN Highland Thornveld busakhona;
- Kutholakale izindawana ezincane ezinotshani kodwa akubukeki bungaphilisa izinhlobo zezilwane eziyimvela kancane;
- Ngaloku ke, lendawo ayibalulekile kakhulu uma sikhuluma ngokwezitshalo nezihlahla.

Yonke lendawo ibukeka ingahlala izinhlobo ezithile zezilwane kodwa akukho okuvimbela ukuthi yakhiwe.

#### **Geotechnical (Ezomhlabathi nokulungela kwawo ukwakha)**

Iriphothi isabhalwa.

#### **Geohydrological (Ezamanzi angaphansi)**

Iriphothi isabhalwa.

Ngokocwaningo lwalezi zifundo, lendawo ayikho endaweni ezwelayo ngokwezemvelo noma eduze kwemifula namaxhaphozi.

Ngokomthetho wezamanzi obuyekeziwe (National Water Act (36 of 1998), lokwakhiwa akuzodinga ilayisensi ephuma emnyangweni wezamanzi. Amanzi okuphuza azolethwa kumasipala, amanzi angcolile azoya esitamkokweni, ayikho imifula namaxhaphozi azothinteka futhi awukho udoti ozolahlwa isinoma ikanjani.

## Ukuphazamiseka okungaba khona nokuthi kuzovinjwa kanjani

Ngalenkathi kulungiselelwa lesi sicelo, ukuphazamiseka okungabakhona kwimvelo, umnotho noma kubantu kuyabhekisizwa ngokuthi kuyiwe endaweni le ezothuthukiswa, kubukwe namamephu kuphinde kumbandakanywe nabantu abafisa ukwazi kabanzi ngalesi sicelo. Izinkinga ezibonakala zinkulu futhi ezidinga ukubhekwa kabanzi ziyalandelwa ngokuxhumana nongoti abathintekayo. Labongoti babhala amariphothi abo ngokulandela imibandela abasuke beyinikiwe ukuze konke okudinga ukubhekwa kungashodi, nokuthi izincomo ezikhishwayo zibe ezifanele futhi ezizosebenza. Loku kwenza ukuthi intuthuko ibe nemiphumela enciphile engakhahlameza imvelo.

Izindlela zokunciphisa umonakalo zizophuma futhi nakulabo abazimbandakanyayo nalesi sicelo, ongoti, onjiniyela kanye nabaphathi balesi sicelo. Lonke ulwazi luzohlanganiswa, lubhekisiswe bese lufakwa kwiriphothi. Emva kwaloku, ubukhulu bomonakalo ngamunye okungenzeka uphume, uzobe usunikezwa isikali esifanele ukuze kubonakale ubukhulu nobuncane bawo.

Ukunikezela kwesikali lesi kuzokwenziwa umphathi sicelo, ngokubuka nolwazi analo futhi ngesimo semvelo ezothinteka. Ulwazi oluzokalwa luzobe luphuma kongoti, umphakathi kanye nanoma ubani onesifiso sokudlala indima kulesi sicelo.

## Isicelo semvume sezemvelo

**Naku okumele kwenziwe mayelana nesicelo sezemvelo:**

Isitephu	Senzeke/ senzeka nini 8 Oct 2021 / Usuku olubekiwe lokuqeda
1. Umnikazi owakhayo uqasha umphathi sicelo sezemvelo u Ms Vicki King wase Metamorphosis Environmental Consultants)	April 2021
2.. Umphathi sicelo sezemvelo uhambisa iriphothi yokuqala esazobuyekwezwa, iriphothi eveza imvelo yendawo kanye nomdwebo oveza okuzokwakhiwa. Konke loku kuya emnyangweni wezemvelo	12 June 2021
3. Umhlangano phakathi komphathi sicelo kanye nomnyango mayelana nokuhlongozwayo	28 July 2021
4. Umnyango uyasho iziphi izifundo ezidinga ukwenziwa	28 July 2021
5. Isicelo siyaqhubeka, kumbandakanya nokwaziswa komphakathi ngalesisicelo	Kuyaqhubeka
6. Ukumbandakanywa komphakathi <ul style="list-style-type: none"> <li>• Umphathi sicelo uthintana nomakhelwane, abaphathi beminyango kanye nezinhlangothi zendawo</li> <li>• Umphathi sicelo ubhala bonke abathintekayo nababhalisile kwilisti efanele</li> <li>• Umphathi sicelo ubhala isaziso, amaposter kanye nebhuku elichaza kabanzi ngalesisicelo</li> <li>• Umphathi sicelo ufaka isaziso ephepheni i- Isolezwe kanye ne Estcourt News</li> <li>• Umphathi sicelo ufaka ama nothisi esayithini naseduze kwayo</li> </ul>	Kuyaqhubeka  Kuyaqhubeka  20 September 2021  8 October 2021  8 October 2021



<ul style="list-style-type: none"> <li>• Iphepha elichaza kabanzi linikezelwa kumphakathi nabathintekayo</li> <li>• Kubhaliswa bonke abasafisa ukuthola ulwazi</li> <li>• Kubhalwa itafula layo yonke imibono kanye nemibuzo efikile</li> </ul>	8 October 2021 8 November 2021 Kuyaqhubeka
7. Umphathi sicelo uzohlanganisa iriphothi kanye nebhuku elizochaza okumele kwenziwe mase kwakhiwa (okusazobuyekizwa). Lemibhalo izohanjiswa kubona bonke ababhalisile kanye nasemnyangweni ukuthi ifundwe izinsuku ezingamashumi amathathu.	15 October 2021
8. Umphathi sicelo uzothatha izincomo nemibuzo ephume lenkathi kufundwa lamariphothi, mese ekuqoqa konke ndawonye.	15 November 2021
9. Umphathi sicelo uzohambisa ifomu lesicelo semvume yezemvelo emnyangweni	22 November 2021
10. Umphathi sicelo uzobhala iriphothi yokugcina mese eyihambisa emnyangweni.	22 November 2021
11. Ukulinda ukuthola imvume yezemvelo	Dec 2021 / Jan 2022
12. Ukuphakamisa ukungahambisani nesinqumo somnyango	Jan / Feb 2022

### **Okulandelayo kulesi sicelo**

Isikhathi sokubhalisa ezingamasonto amane sizovunyelwa kubantu abafisa ukubhalisa imininingwane yabo egcwele nabafisa ukuletha imibono yabo. Bonke ababhalisile bazokwaziswa ngokuqhubekayo kulesi sicelo baphinde bathole wonke amariphothi abhalwayo.

Uma kubonakala isidingo, umhlango uzokwenziwa nalabo ababhalisile nabathintekayo ukuze kuxoxiswane kabanzi ngesicelo lesi.

Uma ufisa ukubhalisa njengomuntu othanda ukwazi noma othintekayo kulesi sicelo, sicela ubhalise ifomu eliandelayo.

**Umetho we POPI:** Ngokubhalisa kwakho njengomuntu ofisa ukuthola ulwazi noma othintekayo, uyasivumela ukuthi sisebenzise imininingwane yakho efaka igama kanye nenombolo yocingo. Loku kuzohanjiswa emnyangweni wezemvelo ukuze kucutshungulwe isicelo ngokomthetho wama EIA Regulations.

## ISIMEMO SOKUTHI UBHALISE NOMA UFAKE UMBONO

Uyamenywa ukuba ubhalise noma ubeke umbono ngalesi sicelo, sicela ugcwalise ifomu elingezansi mese ulibuyisela ku Ms. A Kay (imininingwane ngezansi)

### SICELA WAZI- UMA UNGABHALISI, ANGEKE UKWAZI UKUTHOLA ULWAZI NJALO NGALESI SICELO

Ms. A Kay  
Ifeksi: (031) 764 7897  
Imeyili: [admin@metamorphosisdbn.co.za](mailto:admin@metamorphosisdbn.co.za)

Isigaba:	Amagama:	Isibongo:	Amagama efingqiwe:
Inhlango:	Isikhundla:		
Iposi:			
Ikhodi:			
Ucingo:		Umakhalekhukwini:	
Ifeksi:		Imeyili:	

### IMIBONO

**Umthetho we POPI:** Ngokwemithetho ye NEMA Regulations, yonke imibono efikayo izofakwa kwiriphothi ezoba semehlweni omphakathi, ngokuletha umbono, uyavuma ukuba igama lakho lifakwe kwiriphothi, kanjalo unalo ilungelo lokuthi igama lakho lingafakwa, kepha loko kungenzeka kushodise ulwazi umnyango olundingayo ukuze wenze isinqumo. Uma ufisa ukugodla igama lakho, sicela usazise lokhu.

*Siyacela usithumele imininingwane yabangafisa ukuthola ulwazi ngalesi sicelo, Syabonga  
ukuzimbandakanya kwakho*